

1802 Briv

Aluminium - Countersunk head
3.2 mm (1/8") - 4.0 mm (5/32")

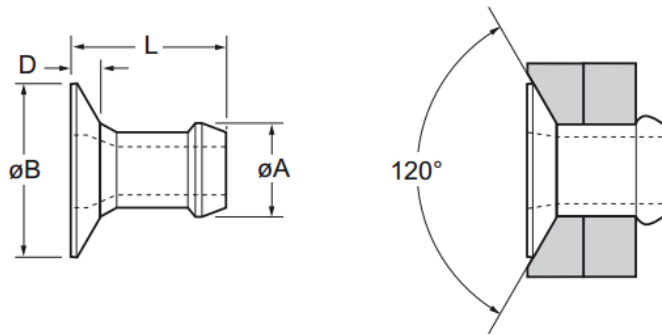
Features

- Bulbed tail and foreshortening of the fastener during installation ensures consistent high clamp and shear
- Bulbed tail and large head style provide a large bearing area for soft materials
- Tapered tail for ease of hole entry
- Expands radially during installation to ensure maximum hole fill
- Lower in-place costs than welding or nail rivets
- Can be used to assemble many materials including metal, plastic and aluminium alloy
- Can be bowl fed for larger volume applications using automated equipment



Material

- Aluminium alloy (5% Mg), natural



Part No.	Size ø	Grip Range		Hole Size		øB max.	D max.	L max.	øA max.	Fasteners per pod ± 1	Shear (typical) kN	Tension (typical) kN
		min.	max.	min.	max.							
01802-00406	3.2 (1/8")	1.52	2.79	3.26	3.34	5.84	0.76	4.77	3.14	64	0.76	1.31
01802-00407		2.54	3.81					5.79		52		
01802-00408		3.56	4.83					7.82		38		
01802-00410		4.57	5.84					8.84		33		
01802-00411		5.59	6.86									
01802-00505	4.0 (5/32")	1.57	2.93	3.97	4.04	6.98	1.02	5.18	3.88	59	1.13	1.73
01802-00506		2.15	3.43					5.69		54		
01802-00507		2.66	3.94					6.19		49		
01802-00509		3.68	4.96					7.21		42		
01802-00511		4.69	5.97					8.22		36		
01802-00513		5.71	6.99					9.24		32		

Assembly Applications

- Automotive
- Electronic components
- Sheet metal
- Electrical engineering
- Domestic appliances
- Furniture
- General light fabrication

